

Rapidlogger Systems

Changing Date and Time on the Rapidlogger Unit

The Rapidlogger System is equipped with a battery backed clock. The system clock retains the correct time and date for up to 2 years. If the unit seems to be losing its date and time and reverting back to a date earlier than 2010 then it means that the clock battery needs to be changed. The clock battery is of type CR1616 and is commonly available. This tech note describes the process to change the Date and Time on the Rapidlogger Unit by two methods.

BY USING THE RAPIDLOGGER UTILITY PROGRAM

In order to change the date/time on the Rapidlogger Unit the program called the "*Rapidlogger Utility*" is needed. This document describes the use of the "*Rapidlogger Utility*". You should only use version number 2.1.0.50 or newer versions of this utility program. The program is available on the CD that is shipped with your system. Before using this program the PC should be connected to the Rapidlogger System with an Ethernet cable and the network setup should be completed. The network setup is described in a different document.

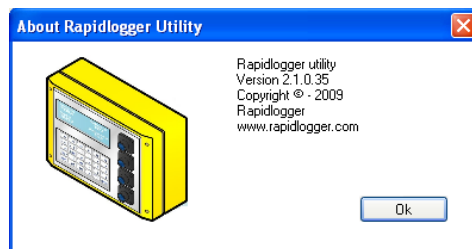


Figure 1: Rapidlogger-Utility program Version

The first step is to install the "*Rapidlogger Utility*" program on your PC. To install double click on the setup.exe file inside the Rapidlogger Utility folder on the CD.



Figure 2: Running the Rapidlogger Utility from the program menu

Rapidlogger Systems

Now run the program by clicking on the program icon for Rapidlogger Utility in the program menu.

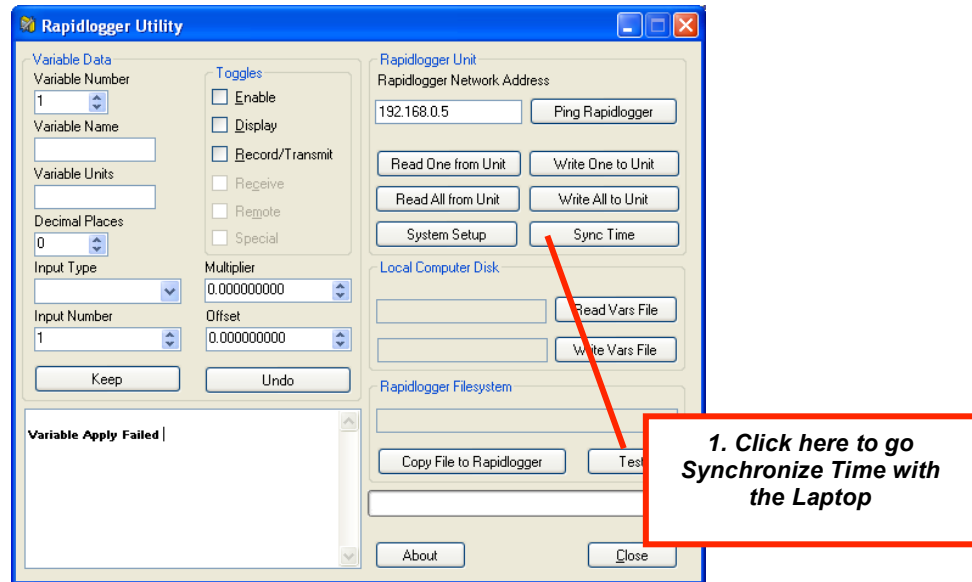


Figure 3: Using the Rapidlogger Utility

Click on the button "Sync Time". If the message in the window shows "Time set: and Done" then the time setup is complete. Power down and power back up the Rapidlogger unit for the new time and date settings to take effect.

BY USING THE RAPIDLOGGER Keypad

Time Setting

The date and time can also be changed from the Rapidlogger Keypad. In order to change the date and time on the Rapidlogger. Press **F6 / MENU** then press **F6 / SYSTEM** then press **F3 / TIME**. Now message will appear asking for the day, then month then year. Then the system will ask for hour minutes and seconds. Once the correct values have been entered Press the ENTER key. Power down and power back up the Rapidlogger unit for the new time and date settings to take effect.