

Rapidlogger™

Job Monitoring System for Cementing Units



package is very compact and suitable for panel mounting or in the control cab of oilfield trucks.

The Rapidlogger hardware can be used in many different applications. When used in the Cement pump mode the system measures, displays and records, the pump pressure, rates, volumes and other parameters that the operator may choose. It can also be setup to trip the pump if the pressure exceeds a high limit preset by the operator.

Software

The Rapidlogger panel runs a real-time embedded operating system on its rugged high-speed microprocessor. The real-time operating system allows the system to turn on instantly and be crash proof. The RapidVu is the software for graphing and preparing quick and easy job reports on a PC. The RapidVu program is not required to run and record a job but if needed can acquire data from the Rapidlogger system in real time or play back a previously recorded job from a USB stick.

Rapidlogger Systems designs and manufactures a line of rugged and efficient job monitoring systems for oilfield applications.

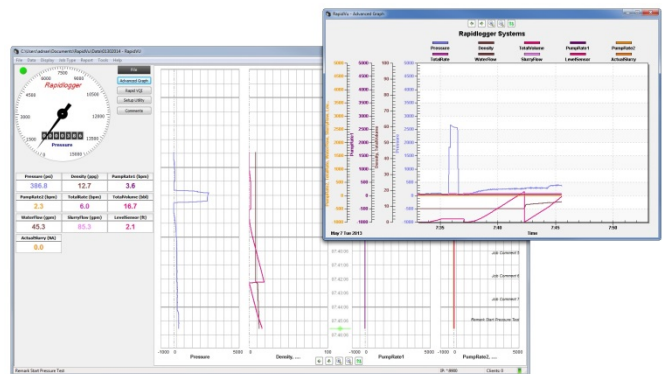
At Rapidlogger Systems we have designed and developed a range of products for use in the oilfield. Our products are extremely rugged and designed for the harsh oilfield and petrochemical environments. The Rapidlogger system enhances operational safety and improves operations through its efficiency and ease of use.

Highlights

The Rapidlogger is a compact and cost-effective system for job monitoring and recording on cementing units. It is suitable for use on both single and double pump cementers.

It is the most efficient system available in the market today. The system is simple to use and an equipment operator can use the system without any training. Job data can be recorded on removable and upgradeable MMC/SD flash memory cards. The standard system has 16 analog data channels, 8 frequency channels. The system also has 8 high current solid state relay outputs and one analog output. The system is expandable and more data acquisition channels can be added as required.

The Rapidlogger does not need a PC for operation. However if needed it can transmit data to a PC in real time. The large internal memory can record many months of job data for future retrieval. The



Specifications

| | |
|------------------------|-----------------------|
| Operating Temperature | -40C to 70C |
| Operating Environment | NEMA 4X |
| Analog Inputs | 16/32 max, 24bit |
| Frequency/Depth Inputs | 8/16 max |
| Digital Outputs | 8/16 max |
| Analog Outputs | 4/8 max |
| Display | LCD w/ Backlight |
| Computer Interface | Serial, Ethernet, USB |
| Power | 12/24DC, 110/240AC |
| Job Memory | 8GB |